



COMMUNITY OF CARING FOUNDATION

# NEWSLETTER

Spring 2009

Aspen Mine Center, Cripple Creek, Colorado

Vol. 6, No. 1

## ***GED PROGRAM RETURNS TO ASPEN MINE CENTER!***

When Diana Allen, executive director of Community Partnership, and Mary Biez, executive director of Community of Caring Foundation, put their heads together, you can count on something useful happening in our community. This year, it is the return to the Aspen Mine Center of Community Partnership's excellent GED program, after an absence of several years.

Anyone who needs a high school equivalency diploma are encouraged to apply for the classes, held at the Aspen Mine Center Tuesday, Wednesday and Thursday evenings from 5:00 p.m. to 8:00 p.m. Class instruction is primarily one-on-one, making it easy for you to begin (and continue) your study whenever it is possible and convenient for you. Snacks are provided. Free child care is available.

Program coordinator Karen Casey-Svetich and educator Kathy Moore are joined by several local volunteers to provide one-on-one instruction in math, reading, writing, social studies (civics, history, government) and science. In addition, Carol Barron of

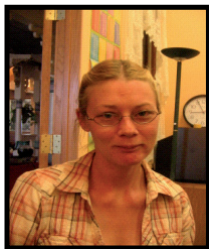


**Kathy Casey-Svetich, Carol Barron and Kathy Moore (all standing) spend time with each GED student one on one during the classroom hours.**

Victor is currently teaching English as a Second Language (ESL) to four to six students. About two dozen students are enrolled in the Cripple Creek program at this point.

The program has been active for less than two months but already it has one graduate, with two more graduating soon. Graduation requires passing a two-part test. The first part of the test

*cont. p. 2*



**BECKY PARHAM,**  
our early childhood  
education and care  
(ECEC) liaison, works  
from the  
Aspen Mine Center.

## ***Teller County's Early Childhood Education & Care Liaison***

As soon as the Teller County Board of County Commissioners approved social services funding for a 9-month contract for an early childhood child care liaison for southern Teller County, the search was on! The search was successfully concluded with the hiring of Becky Parham.

Filling the liaison position was the next step in the ECEC program of the Southern Teller County Early Childhood Education and Care task force, which met throughout 2008, to address the unmet need in our community for

qualified child care for infants and toddlers, as well as older children. The group was spearheaded by Build A Generation's Lisa Noble, with participation by Community of Caring, school district RE-1, Cripple Creek parks and rec, social services and interested citizens.

Becky, who began work in January, brings passion, energy and expertise to the job.

*cont. p.2*

## Liaison Becky Parham, *continued*

A lifelong Cripple Creek resident, with a toddler of her own, she was an America Corp. Promise Fellow.

"Becky has extensive training in leadership, building coalitions and focusing on strategic planning," says Bielz.

Parham says, "Our community was at crisis stage, with no licensed providers for 0-3 and no evening or weekend licensed care for any age group."

The task force, believing there was a need ultimately for 24/7 care for all ages, sought to find out exactly what parents and other community members thought. It created a community survey. The results were analyzed and a plan was completed. The task force then concluded it needed a community liaison to accomplish all the tasks on the plan within a reasonable time period.

"My job is to assure community members succeed in becoming licensed home-based child care providers," Parham says.

She is also creating a community-focused tool kit containing all the information needed to become a licensed provider, mobilizing a child care workforce, identifying

potential providers and assisting them with the paperwork minutia and other issues to help them become fully trained and licensed.

Her work includes facilitating training. For information or to register for classes on pre-licensing training, universal precautions and medication administration training, call Becky at 689-5894. Mini-grants may be available.

**CARMEL COMMUNITY LIVING** would like to inform parents, teachers and advocates of students and adults with developmental disabilities that it has opened an office in Woodland Park. For the first time, individuals with Down Syndrome, mental retardation, cerebral palsy and other disabilities do not have to travel down to Colorado Springs to receive services. Carmel is currently serving six individuals in Woodland Park, Cripple Creek, Victor and Hartsel. Their services are generally funded by The Resource Exchange or via private pay arrangements and include in-home and out-of-home respite care, training and support in community experience, daily living and social skills, work programs, and work experience via the Jewelry Assembly Program. Please call Leigh Stock for more information at 719-687-8647 (office) or 719-313-8171 (cell). The Woodland Park Carmel office is located behind the Starbucks off Hwy. 24 at 321 W. Henrietta.

### COMMODITIES FOR MAY 29, 2009

Frozen pork patties  
Eggs  
Tuna  
Rice  
Tomato sauce  
Canned peaches  
Canned carrots  
Canned sliced potatoes  
Grapefruit juice  
Frozen boneless chicken breasts  
Rice Krispies cereal  
Peanut butter

## GED at Aspen Mine Center, *continued*

consists of a math test and essay. The second part of the test covers language arts, social studies and science. Tests are given at the Woodland Park library and in Colorado Springs.

"What we teach primarily is critical thinking and reading," says Casey-Svetich. "Those skills are essential, both for getting your diploma and throughout your life."

A diagnostic test is given to students when they begin the program, to help establish a personal curriculum. Students range in age from 18 to over 50.

Program sponsors are the Pikes Peak Workforce Center, Community of Caring and the Cripple Creek-Victor Gold Mine.

The program costs just \$20. Testing is \$90; scholarships are available. There is no cost for the on-site child care.

Moore says, "If you are not enrolled in another school, you can enroll in our GED program."

"It's never too late!" she adds.

For more information, to register for classes, or to volunteer to teach a subject or tutor in one, call Karen Casey-Svetich at 661-0379. (If you prefer to attend morning classes, which are held at the Community Partnership location in Divide, call that office at 686-0705.)

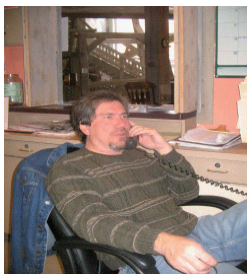


### SPOTLIGHT

On an Aspen Mine Center program



**GED educator Kathy Moore and program coordinator Karen Casey-Svetich.**



## Coordinator's Corner

by Ted Borden

I am frequently asked by friends, family or other professionals what the Aspen Mine Center is and what I do here. My reply is always enthusiastic and usually includes something about it being a "one stop shop, a collaboration of agencies and programs for residents of Teller County, which provide streamlined, efficient access to services and encourage clients toward greater self sufficiency and quality of life."

That's the long answer. The short answer is that we offer hope to people who are having a tough time, and a place of connection for everyone in the community to enjoy.

In tough economic times there is a tendency to fear the "what ifs." There is also a tendency to blame the system or the government for the current state we're in. It's easier sometimes to go to that negative place, to doubt the path we're on as

well as our own value and ability. My experience in working with people in this capacity has taught me that the tough times can be opportunities to shine; to bring people together, be more compassionate, and appreciate the things that we may have taken for granted before.

I have witnessed resilience and a resolve in clients facing challenges that is inspiring. They have demonstrated a willingness to lift others up with words of encouragement or deeds of kindness despite dealing with great adversity themselves. To the clients, friends and neighbors I see at the Aspen Mine Center, thank you for teaching me that in the midst of life's greatest challenges, the greatest gift we give ourselves is the by-product of the hope and compassion we give to those around us.

There is always hope. Give it to others and you will find it in yourself.

**Relatives In Need Of Support (RINOS), a Grandparent/Kinship Care Support Group, meets the 1st and 3rd Thursday of each month in The Aspen Mine**

**Center. Child care is provided.**

**For more information, contact Richard Kleiner at 689-3584 ext. 108 or Lisa McIver-Ross at 499-2151.**

## The Backpack Kids Nutritional Program

From Cresson Elementary School's special ed department comes a unique program. Kids' backpacks are filled with kid-friendly snack foods at the end of each week, and the kids take them home so they have snacks throughout the weekend.

"We sent out a letter to all the elementary school families, asking them if they'd like to participate," said Diana Baker. "We send out 33 backpacks covering 56 kids."

"My boss, Gloria Thompson, brought us the idea from her prior school," said Baker. "And of course Mary Bielz has been a big part of getting it going."

Thompson is K-3 special ed teacher at Cresson Elementary. Thompson and Baker have the students help unload supplies and fill the backpacks with things like mac and cheese, pudding, cereal and fruit snacks.

Community of Caring provided \$500 to start off the program. WalMart and the Aspen Mine Center donated the backpacks, and the program has received an \$1850 EPYCS grant as well.

The program is open to all K-6 families.

## Prospect Home Care & Hospice



**Annual Johnny Jump Up Sale:**  
April 13 through May 1

These cheery little flowers will add color to your life—in your gardens, patios, and containers. Place your order at one of many locations throughout Teller County...call us today to find out the location nearest you.

All proceeds from the sale help support Prospect's mission of providing the highest quality home care and hospice services to the residents of the Ute Pass region.



Home Health Care  
Home Hospice  
Physical, Occupational, & Speech  
Therapy  
Homemaking • Personal Care  
Personal Emergency Response Systems

719.687.0549  
[www.prospecthch.org](http://www.prospecthch.org)

*Your Partner. For Life.*

**Make a tax-deductible contribution to Community of Caring today!**

\$25 ☐ \$50 ☐ \$100 ☐ Other ☐ \$\_\_\_\_\_

NAME: \_\_\_\_\_

ADDRESS: \_\_\_\_\_

CITY: \_\_\_\_\_ ST \_\_\_\_\_ ZIP \_\_\_\_\_

Mail to: Veldean, Aspen Mine Center, P.O. Box 1587, Cripple Creek CO 80813

## Services and Office Hours at the Aspen Mine Center

*Services accessible through the Aspen Mine Center, 166 E. Bennett Avenue, Cripple Creek, 689-3584:*

**Alcoholics Anonymous Meetings** ... 7 pm Mondays at Aspen Mine Center.

**Aspen Mine Food Pantry** ... 9 am – 5 pm, Monday through Friday

**Aspen Mine Senior Club** ... Hot meals 11:45 am-12:15 pm Mon., Wed., Fri.; for information on activities and resources, call 689-3584.

**CASA** (Court Appointed Special Advocates) ... By appointment. Call 447-9898 x1007

**Commodities**... 9 am – 2 pm last Friday of each month.

**Community of Caring** (assistance programs) ... 9 am— 5 pm Monday through Friday.

**Community Partnership** ... Play group for ages 0-9, Fridays 9 a.m. to 11 a.m., Cresson Elementary Preschool rooms. For information, call Cathy at 687-8054. For information on other programs, call 686-0705.

**Cripple Creek Coffee** (and Internet Café) ... Summer hours 7 a.m.-4 p.m. Monday through Saturday

**Dressing Room** (clothes closet) ... 8 am-5 pm Monday through Friday. See staff for key.

**GED program** ... 5 pm-8 pm Tuesday-Thursday evenings at Aspen Mine Center.

**Journeys Counseling Center** ... Group classes 9 am and 11:30 am Thursdays or by appointment. To schedule, call Barbara at 687-6927.

**Legal Help** ... Third Thursdays: "Call a Lawyer" 7 pm—9 pm; Legal Aid 1 pm-3 pm by appointment. 471-0381.

**Peak Vista Community Health Center**... Clinic in Divide is open 7:30 am— 6 pm Monday through Friday. For appointments, call 687-4460. For transportation, call Ted or Veldean at 689-3584. Clinic registration at Aspen Mine Center is 9 am-noon last Friday of each month. Call Leona at 228-6667.

**Pikes Peak Mental Health Center** ... By appointment. Call 572-6330 or 689-3584.

**Pikes Peak Workforce Center** ... 9 a.m.-3 p.m. Monday through Thursday; see Hank. Second and fourth Tuesdays Spanish-speaking assistance by appointment with Maria. Call for more information 689-3584.

**Prospect Home Care & Hospice** ... By appointment at the Aspen Mine or your home. Call 687-0549.

**RINOS Support Group**... 6-8 p.m. first and third Thursdays. Call 719-499-2151 for more information.

**Salvation Army** ... 8 a.m.-5 p.m. Monday through Friday

**Teller County Dept. of Social Services** (Medicaid) ... 8:30 a.m.-4:30 p.m. Monday, Wednesday, Thursday, Friday; and 8:30 to noon, Tuesday.

**Teller County Public Health (TCPH)** ... Every Wednesday, by appointment 11 a.m.—noon and the last Friday of each month by appointment 9 a.m. to 3 p.m. Call 687-6416 for information/appointments.

*Well-Child exams and preschool physicals; Child/Adult Immunizations;*

*Health Screenings (cholesterol, blood pressure, glucose, oxygen level);*

*Women's and Men's Health Services; Nutrition/Weight education; Smoking Cessation*

**Teller/Park Early Childhood Council** ... For more information or to participate, call 719-836-0706.

**Teller Pregnancy Resource Center** (ultrasound) ... 11 a.m.-3 p.m. Fridays; Woodland Park noon to 4 p.m. Monday—Friday. Call 687-1200.

**TESSA** (advocacy and therapy for victims of domestic violence) ... 8:30 a.m.-4 p.m. Monday—Friday; call 689-3584 x118. Crisis line 719 633-3819. Devra Goodwin 243-5508.

**Vocational Rehab** ... As needed; call for appointment. 635-3585.

**Weight Watchers** ... 6 p.m. Tuesdays.

**Welcome Home Warrior**... For information on services, call Donna at 719 439 3621.

**Wraparound/Family Support Partner** ... For information, call 719-499-2151.

<p>The Aspen Mine Center newsletter is published quarterly by the <b>Community of Caring Foundation</b>, a 501c3 organization.</p> <p><b>Board of Directors</b> Gerald Bergeman Mary Bielz F. Kent Kalb Marti Marc Murphy Carl Poch Jean Olmstead Sue Holmes</p>	<p><b>Aspen Mine Center</b> <b>166 E. Bennett Avenue</b> <b>Cripple Creek CO 80813</b> <b>Phone (719) 689-3584</b> <b>www.aspenminecenter.org</b></p> <p>Executive Director <b>Mary Bielz</b></p> <p>Aspen Mine Center Coordinator <b>Ted Borden</b></p> <p>Administrative Assistant <b>Veldean Petri</b></p> <p>Newsletter Editor/Photographer <b>Suzanne Core</b> Staff Assistant <b>Hank Nelson</b></p>	<p><b>Community of Caring</b> <b>PO Box 1587</b> <b>Cripple Creek CO 80813</b></p> <p>TO: _____</p> <p>_____</p> <p>_____</p>
--	--	---